

MBW BlitzScreed

MBW EUROPE LIMITED

Concrete Power Screeds



3/19/2018

MBW EUROPE
01204 387784



WWW.MBWEUROPE.COM



1

What is a Concrete Truss Screed used for?

- Leveling
- Crowning
- Inverting

FOR



- Large production applications
- Concrete consolidation through uniform vibration

3/19/2018

MBW EUROPE
01204 387784



WWW.MBWEUROPE.COM



Other Types of Screeding

Wood, aluminum, magnesium studs



3/19/2018

MBW EUROPE
01204 387784



WWW.MBWEUROPE.COM



Other Types of Screeding

MBW EUROPE LIMITED

Wet Scream



3/19/2018

MBW EUROPE
01204 387784



WWW.MBWEUROPE.COM



Truss Screed Material

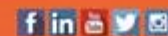
MBW EUROPE LIMITED

Aluminum or Steel Truss Systems



3/19/2018

MBW EUROPE
01204 387784

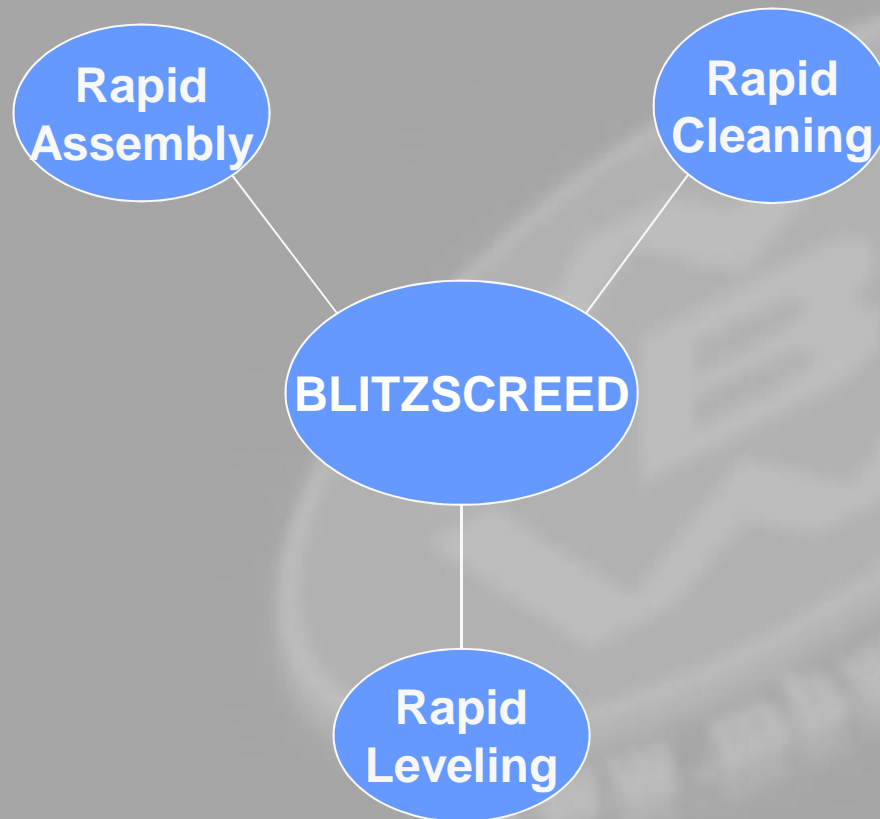


WWW.MBWEUROPE.COM



5

What does Blitzscreed mean?



- More productivity by providing a design that enables rapid assembly and disassembly.
- Open A-frame design allows easy access for cleaning
- Patented turnbuckles make levelling & crowning easy

3/19/2018

MBW EUROPE
01204 387784



WWW.MBWEUROPE.COM



MBW BLITZSCREED

MBW EUROPE LIMITED



3/19/2018

MBW EUROPE
01204 387784



7



WWW.MBWEUROPE.COM

Sections

MBW EUROPE LIMITED



- Screed sections are available in 2.54mtr, 1.32mtr and 0.71mtr length sections.
- Can be assembled up to variety of lengths dependent upon engine/motor or air-drive.
- Each section comes with a complete hardware kit to assemble to another section.

3/19/2018

MBW EUROPE
01204 387784



WWW.MBWEUROPE.COM



Features

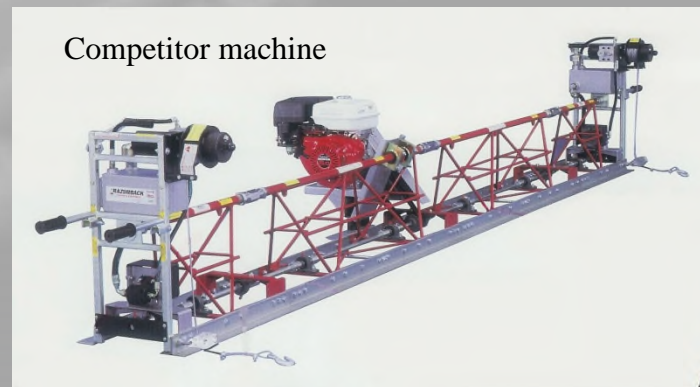
Cast components are
precision machined to
ensure perfect
alignment each time -
No weldments to break



Competitor machine



Competitor machine



3/19/2018

MBW EUROPE
01204 387784



WWW.MBWEUROPE.COM

Applications

MBW EUROPE LIMITED



3/19/2018

MBW EUROPE
01204 387784



10



WWW.MBWEUROPE.COM

How does MBW Work?

MBW EUROPE LIMITED



3/19/2018

MBW EUROPE
01204 387784



WWW.MBWEUROPE.COM



11

How does MBW Work?

MBW EUROPE LIMITED



Close up of bearing showing the eccentricity within the bearing.

Eccentric bearings create vibration

3/19/2018

MBW EUROPE
01204 387784



WWW.MBWEUROPE.COM



12

How are screeds driven?



Petrol Powered Engines

- MVS is a mechanical screed powered by a petrol engine.
- A GX160 Honda engine can be used up to 12.5mtrs. When screed extends beyond 12.5mtrs it is recommended to use a GX270 Honda engine.
- When using self-propelled power winches a GX270 engine should always be used.

3/19/2018

MBW EUROPE
01204 387784



WWW.MBWEUROPE.COM



13

Air Powered BlitzScreed

MBW EUROPE LIMITED

Air enters the machine, water is removed, then the pressure is regulated and then oiled.



Air vibrators, made from naval bronze, are positioned every 60cm and each vibrator requires 112 litres of air per min

For Pavement Quality concrete additional vibrators are recommended

3/19/2018

MBW EUROPE
01204 387784



WWW.MBWEUROPE.COM

AirScreed at 18mtrs used in Norway



Note that manual winches were replaced for automatic air powered winches

3/19/2018

15

MBW EUROPE
01204 387784



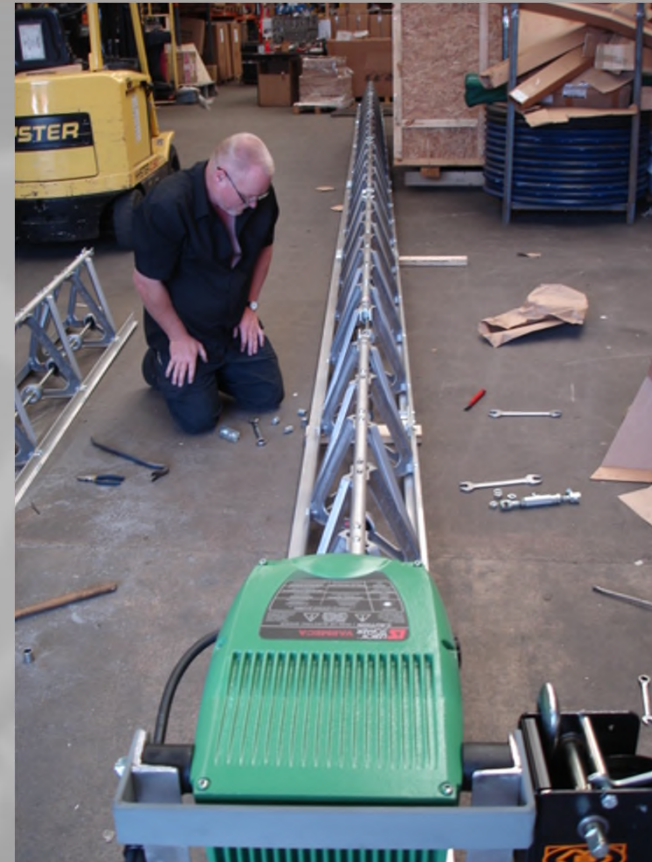
WWW.MBWEUROPE.COM

3 phase electric screed

MBW EUROPE LIMITED



Motor – Leroy Somer Varmeca 5.5kW (7.38hp)
3phase motor
Maximum speed – 2800rpm
Idle speed – 350rpm
Clutch engagement speed – 1950rpm
IP Code – Up-rated to IP56
Motor rpm is variable
Exciter shaft speed – 2800rpm
Weight – 51kg (includes clutch and motor deck)
Heavy duty clutch with 2 belts as standard



3/19/2018

16

MBW EUROPE
01204 387784



WWW.MBWEUROPE.COM

How do screeds move forward?

- Manual Winches
 - Manual winch set uses 18mtrs cables to move the screed forward. They can be located on either side of the screed or two can be used on one end.
 - A steel angle is included to ride on wall railings.



3/19/2018

MBW EUROPE
01204 387784

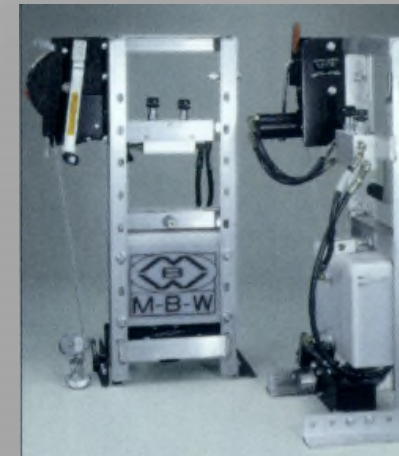


WWW.MBWEUROPE.COM



How do screeds move forward?

- Self-Propelled Hydraulic Winches
 - Self-propelling hydraulic units are speed preset by operator to operate on their own allowing winch operators to assist in puddling.
 - Torque over-ride feature keeps the screed from tipping and twisting screed due to rail obstructions.
 - Quick on/off lever, emergency handle standard



3/19/2018

MBW EUROPE
01204 387784



WWW.MBWEUROPE.COM



18

Features

MBW EUROPE LIMITED

- A-Frame
 - 45° Diagonal Design
 - Reduces Horizontal & Vertical twisting
 - Open design for easy cleaning
 - Less Parts
 - 45° stronger than 90°
 - Die Cast Aluminum
 - Lightweight
 - Durable



3/19/2018

MBW EUROPE
01204 387784



WWW.MBWEUROPE.COM



19

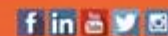
Features

- A-Frame cast aluminium. Exceptional strength and rigidity
- Baked Polyester Chrome Coating
 - Abrasion resistant
 - Prevents concrete build-up to ease in cleaning



3/19/2018

MBW EUROPE
01204 387784



WWW.MBWEUROPE.COM

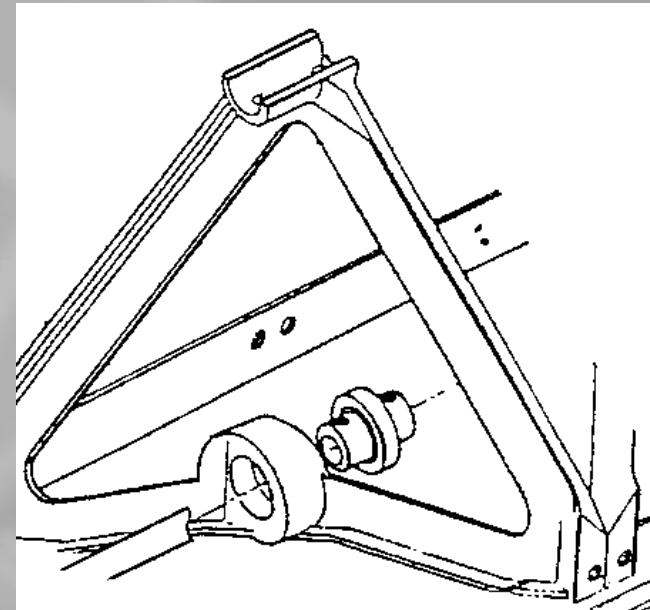


20

Features

MBW EUROPE LIMITED

- Drive System
 - Drive Shaft with Off-set Bearing
 - Off-set bearing located in A-frame with plated drive shaft delivers vibration to concrete.
 - This patented feature provides uniform vibration along the length of the BlitzScreed.



3/19/2018

MBW EUROPE
01204 387784



WWW.MBWEUROPE.COM



21

Features

MBW EUROPE LIMITED

- Flexible Coupler
 - Simple one piece item.
No hardware to secure
 - Splined & keyed for no
mistake connection
 - Flexible for crowning
without special parts
kits.



3/19/2018

MBW EUROPE
01204 387784



WWW.MBWEUROPE.COM



22

Features

MBW EUROPE LIMITED

- Components
 - Front and Rear Edges & end brackets
 - T6061 Aluminum
 - Drive Shaft, Turnbuckle, Blind Nuts, Slice Plates, Hardware
 - Plated Steel
 - Flex Coupling
 - High Density Neoprene Rubber.
 - Belt Guard
 - ABS Plastic



3/19/2018

MBW EUROPE
01204 387784



WWW.MBWEUROPE.COM



23

Features

MBW EUROPE LIMITED

- Turnbuckle
 - Patented
 - Simple, quick assembly
 - Do not have to thread each end or unthread.
 - Simple to line up.
 - No threads to strip.
 - No concrete build-up.



3/19/2018

MBW EUROPE
01204 387784



WWW.MBWEUROPE.COM

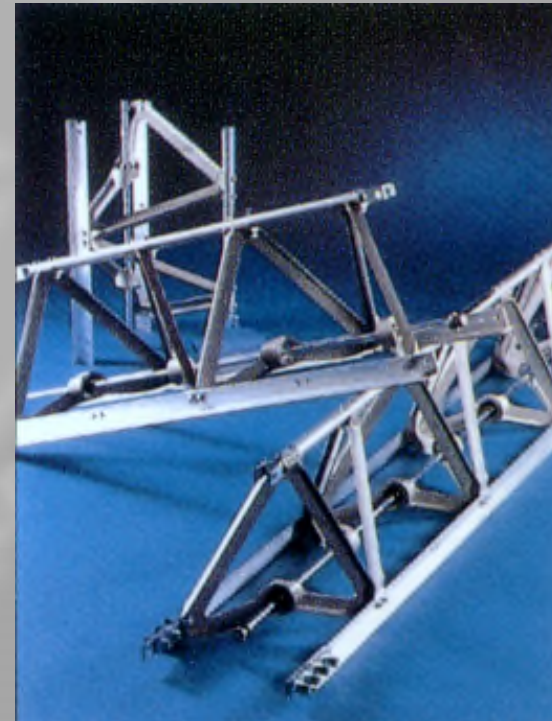


24

Features

MBW EUROPE LIMITED

- Components
 - Top Tube, End Brackets, Front and Rear Edges
 - Fabricated from T6061 aluminium that provides high strength and durability yet has lightweight characteristics necessary for lifting and transporting long lengths of screed while still maintaining its rigidity.



3/19/2018

MBW EUROPE
01204 387784



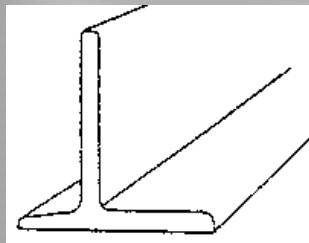
WWW.MBWEUROPE.COM



25

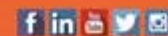
Features

Front and rear rails/edges made from extruded aluminium with front bevel on strike off to cleanly cut the concrete to desired grade. Very strong & durable yet lightweight



3/19/2018

MBW EUROPE
01204 387784



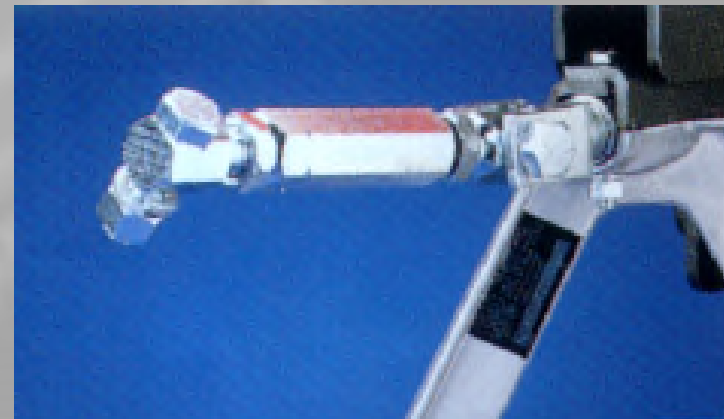
WWW.MBWEUROPE.COM



26

Assembly and Disassembly Hints

- Turnbuckle
 - Each turnbuckle has one end machined down. They should all face the same direction, left or right, to ease in adjusting the screed. All left to go up, all right to go down.



3/19/2018

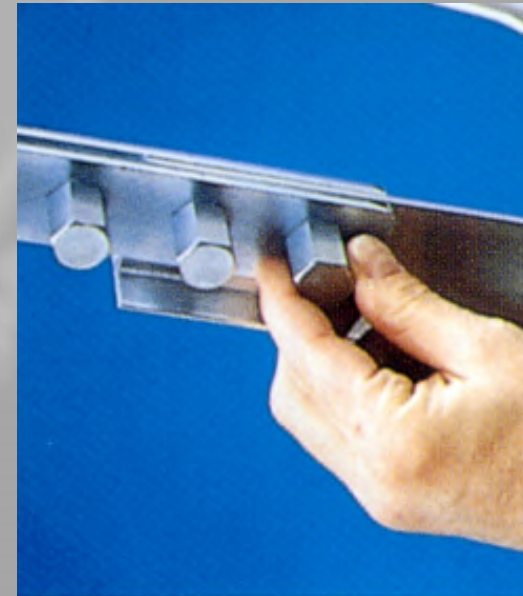
MBW EUROPE
01204 387784



WWW.MBWEUROPE.COM

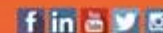
Assembly and Disassembly Hints

- Blind Nuts
 - Hardware should be assembled so that the nuts are facing toward the back. This allows raking the concrete in front of the screed without interference of the hardware. With this hardware concrete is prevented from damaging the threads.



3/19/2018

MBW EUROPE
01204 387784



WWW.MBWEUROPE.COM



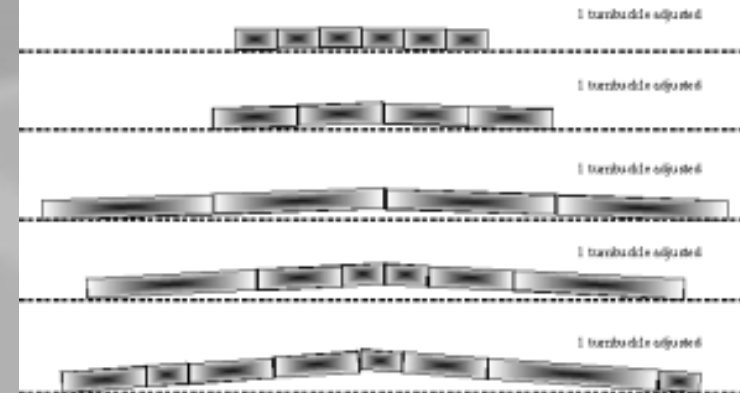
28

Angles

- 2 x MVS 2 16mm or 0.625"
- 2 x MVS 4 32mm or 1.25"
- 2 x MVS 8 63mm or 2.5"
- Basic Formula - For every 30cm of BlitzScreed a height of 3.6mm or .14 inches (9/64") can be attained.

MBW EUROPE LIMITED

Now of course there are various combinations of section connections. We have illustrated a number of different screed combinations as examples of what may occur in the field.



A simple method of determining the angle of a Blitzscreed with different section lengths is the following:

FOR EVERY FOOT OF SCREED YOU CAN ATTAIN .14 INCH.

Or, for example:

A	6 sections of 2'-4" = 14'	14' x .14" = 1.96", (2")
B	4 sections of 4'-4" = 17'-4"	17'-4" x .14" = 2.43", (2-1/2")
C	8 sections of 8'-4" = 33'-4"	33'-4" x .14" = 4.67", (4-3/4")
D	2 sections of 2'-4", 2 of 4'-4", 2 of 8'-4" = 30'	30' x .14" = 4.20" (4-1/4")
E	3 sections of 2'-4", 4 of 4'-4", 1 of 8'-4" = 32'-8"	32'-8" x .14" = 4.60"

3/19/2018

MBW EUROPE
01204 387784



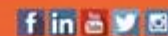
WWW.MBWEUROPE.COM

Key Benefits

- Lightweight
- Fast set-up and break down
- Easy clean up
- Easy leveling
- Bolted design for quick alignment & part replacement. No need for expensive and difficult re-welding of damaged sections

3/19/2018

MBW EUROPE
01204 387784



WWW.MBWEUROPE.COM



30

- **Pneumatic - AirScreed**

- AVS2 0.71mtr 8kg
- AVS4 1.42mtr 16kg
- AVS8 2.54mtr 32kg
- Hardware kit – supplied with each section (part number 08917) 4kg
- Air-Drive kit (part number 08915) 21kg
- Winch kit (part number 08858) includes H frame 15kg

- **Mechanical – Screed**

- MVS2 0.71mtr 8kg
- MVS4 1.42mtr 16kg
- MVS8 2.54mtr 32kg
- Hardware kit – supplied with each section (part number 08899) 4kg
- Winch kit (part number 08858) includes H frame 15kg
- Hydraulic winch kit (part number 15566) 37kg each end
- 5.5hp Honda engine GX160 drive kit (part number 08881) 16kg
- 9hp Honda engine GX270 drive kit (part number 09072) 24kg

Applications

MBW EUROPE LIMITED



3/19/2018

MBW EUROPE
01204 387784



32



WWW.MBWEUROPE.COM

Applications

MBW EUROPE LIMITED



3/19/2018

MBW EUROPE
01204 387784



33



WWW.MBWEUROPE.COM

Applications

MBW EUROPE LIMITED



3/19/2018

MBW EUROPE
01204 387784



WWW.MBWEUROPE.COM



Applications

MBW EUROPE LIMITED



3/19/2018

MBW EUROPE
01204 387784



WWW.MBWEUROPE.COM



35

Applications

MBW EUROPE LIMITED



3/19/2018

MBW EUROPE
01204 387784



36



WWW.MBWEUROPE.COM

Applications

MBW EUROPE LIMITED



3/19/2018

MBW EUROPE
01204 387784



37



WWW.MBWEUROPE.COM

Applications

MBW EUROPE LIMITED



3/19/2018

MBW EUROPE
01204 387784



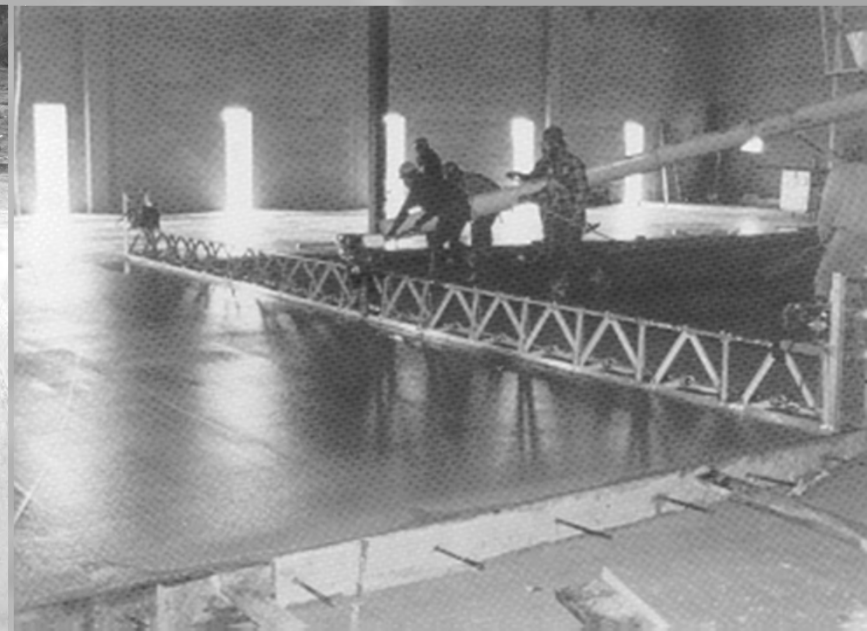
38



WWW.MBWEUROPE.COM

Applications

MBW EUROPE LIMITED



3/19/2018

MBW EUROPE
01204 387784



39



WWW.MBWEUROPE.COM

Blitzscreed Permutations sheet

Size in Metres	2.54mtr section(s)	1.32mtr section(s)	0.71mtr section(s)
3.35	-	2	1
3.86	1	1	-
3.96	1	-	2
4.06	-	2	2
4.57	1	1	1
5.08	2	-	0
5.18	1	2	-
5.28	1	1	2
5.79	2	-	1
5.89	1	2	1
6.40	2	1	-
6.50	2	-	2
6.60	1	2	2
7.11	2	1	1
7.62	3	-	-
7.72	2	2	-
7.82	2	1	1
8.33	3	-	1
8.44	2	2	1
8.94	3	1	-
9.04	3	-	2
9.14	2	2	2
9.65	3	1	1
10.16	4	-	-
10.26	3	2	-
10.36	3	1	2
10.87	4	-	1
10.97	3	2	1
11.48	4	1	-
11.58	4	-	2
11.68	3	2	2
12.19	4	1	1
12.70	5	-	-
12.80	4	2	-
12.90	4	1	2
13.41	5	-	1
13.50	4	2	1
14.22	4	2	2

Much longer lengths are available.

The longest air-screed that we have seen was 33 metres long and in engine driven form the longest was 25 metres, when fitted with 2 x GX160 engines

3/19/2018

MBW EUROPE
01204 387784



WWW.MBWEUROPE.COM



40

TEN REASONS TO BUY AN MBW MECHANICAL BLITZSCREED

- Patented Rigid/fixed eccentric shaft is offset in exclusive bearing collars. Ample amplitude, centrifugal force and uniform vibration along the full screed length. No hammering action failures. No weldment failures.
- Patented keyed and splined flexible shaft coupler simplifies section assembly without multiple hardware pieces. No additional hardware required or cost for invert or crowning.
- Patented double jointed turnbuckle provides precision grade control with easy and quick alignment of bolts through section yoke. No cumbersome threading, thread cleaning and thread stripping.
- Patented unique cast aluminum 45 degree designed A-frames provide maximum structural strength. Coated with a protective covering to allow for quick and easy clean up.
- Blind nuts keep concrete and dirt off the bolt threads for easy removal and assembly and will prevent thread stripping.
- Extruded T6061 aluminum front beveled strike-off edger and rear floating edger maintain their rigid shape for level screeding.
- Engines can be mounted on any section (0.71, 1.32 & 2.54mtr) between bearings for application convenience. Screed can be assembled up to 25mtrs wide with engine or 33mtrs in airscreed version
- Self-propelled hydraulic power winches with an adjustable "auto stop" design to disengage in case of obstructions, prevent tipping. Can be manually operated with detachable winch handles. Variable speed with lockable valve controls. Manual winches also available. Both with 60 foot (18mtrs) length heavy duty aircraft cable.
- Screed is bolted design to easily realign twisted section and quickly replace parts.
- Lightest screed on the market from under 15kg per linear meter.

3/19/2018

41

Options

MBW EUROPE LIMITED

Available Options and Accessories

- 2 Engine Kit Options Honda GX160 & Honda GX270. 1 x Honda GX160 can power up to 12.5 meters. 1 x Honda GX270 can power up to 15 meters and 2 x Honda GX160 are used up to 25 meters.
- Air Powered Screed – can power up to 33 meters
- 3 phase electric motor – can power up to 15 meters
- Manual Winch Kit
- Both manual winches can be mounted at one end of the BlitzScreed
- Hydraulic Winch Kit
- Lifting Handle Kit
- Service Kit
- Kerb roller kit
- For our complete line of MBW BlitzScreed and Wet Screeds refer to our website at www.mbw.com & www.mbweurope.com

3/19/2018

42

MBW EUROPE
01204 387784



WWW.MBWEUROPE.COM

Other products from our
concrete finishing division

MBW EUROPE LIMITED



F24 Edger

Pokers



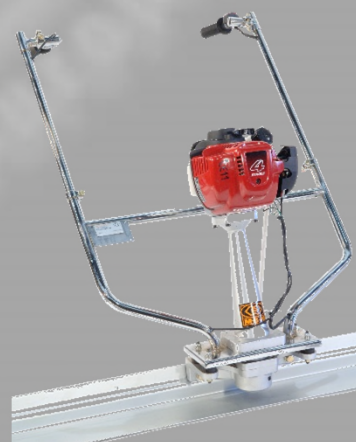
ScreeDemon



Straight edges
up to 7mtrs



Wizard Screed



Other products from our
concrete finishing division

MBW EUROPE LIMITED



2018 F36 with low
vibration handle

Extensive range of
blades and discs

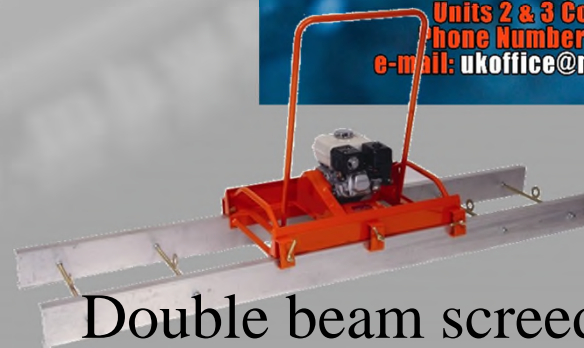


**Concrete Season is upon
us, let us help you out!**



Our Pans and Blades are all made from high carbon content steel

Units 2 & 3 Cochrane Street, Bolt BL3 6BN UK
Phone Number: 01204 387784 Fax: 01204387797
e-mail: ukoffice@mbw.com Site: www.mbw europe.com



Double beam screed

MBW EUROPE
01204 387784



WWW.MBWEUROPE.COM

MBW Europe Ltd

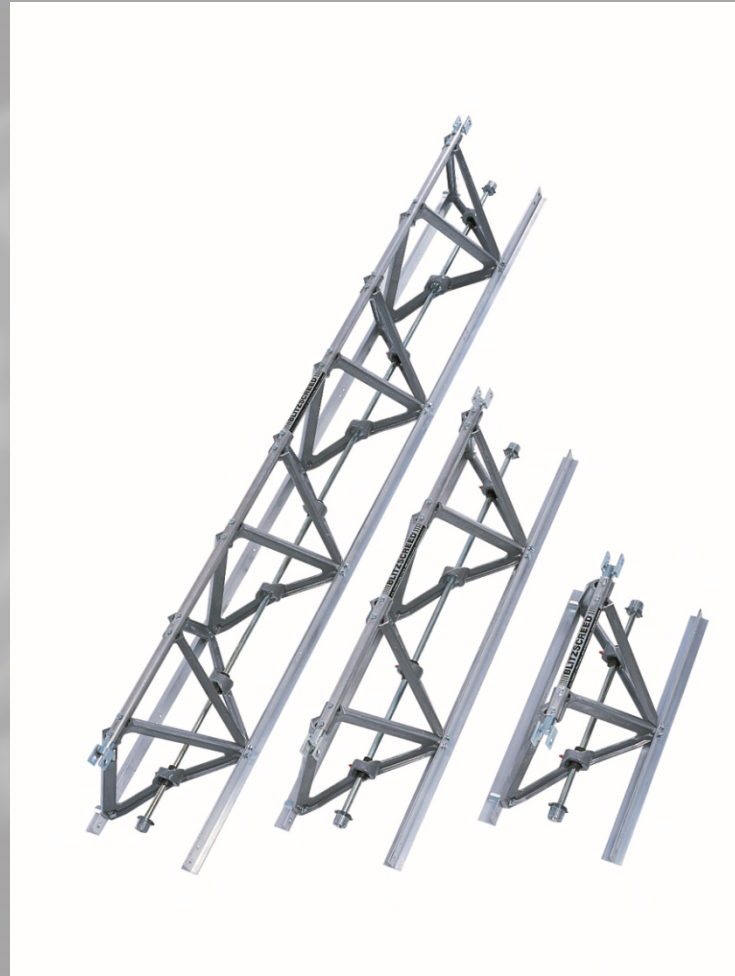
MBW EUROPE LIMITED

Contact us at:

- +44 (0) 1204 387784
mbwuk@mbw.com
mbweurope@mbw.com

Take a look at more
information:

www.mbweurope.com
www.mbw.com



3/19/2018

45

MBW EUROPE
01204 387784



WWW.MBWEUROPE.COM